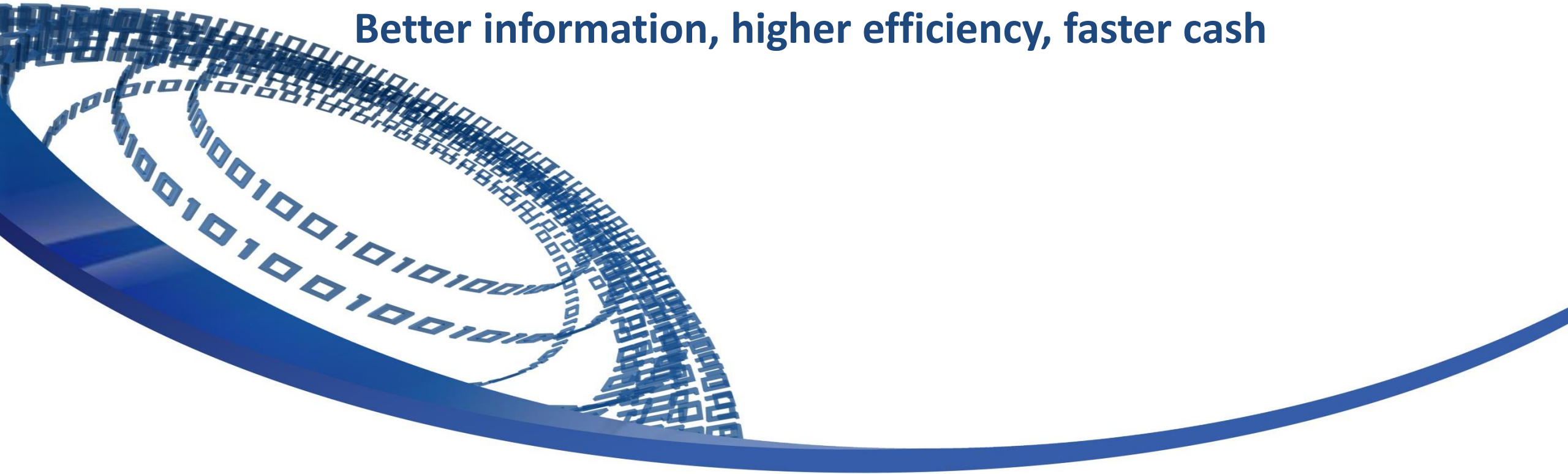


# Ruschlikon

**Better information, higher efficiency, faster cash**



# Better information, higher efficiency, faster cash



The Ruschlikon Initiative connects leading players of the (re)insurance industry to advanced processes such as risk placing, technical accounting, claims and settlement using the ACORD Global Reinsurance and Large Commercial (GRLC) Standards.

## Your benefits at a glance

- ✓ Improved Cash Flow
- ✓ Improved Data Integrity
- ✓ Increased Efficiency
- ✓ Cost Reductions
- ✓ Increased Effectiveness
- ✓ Process Automation & Integration

Steering Committee

Steering Committee

ACORD



AON



Gallagher Re

GuyCarpenter

hannover re



LLOYDS

MAPFRE | RE

Marsh

Munich RE

PartnerRe

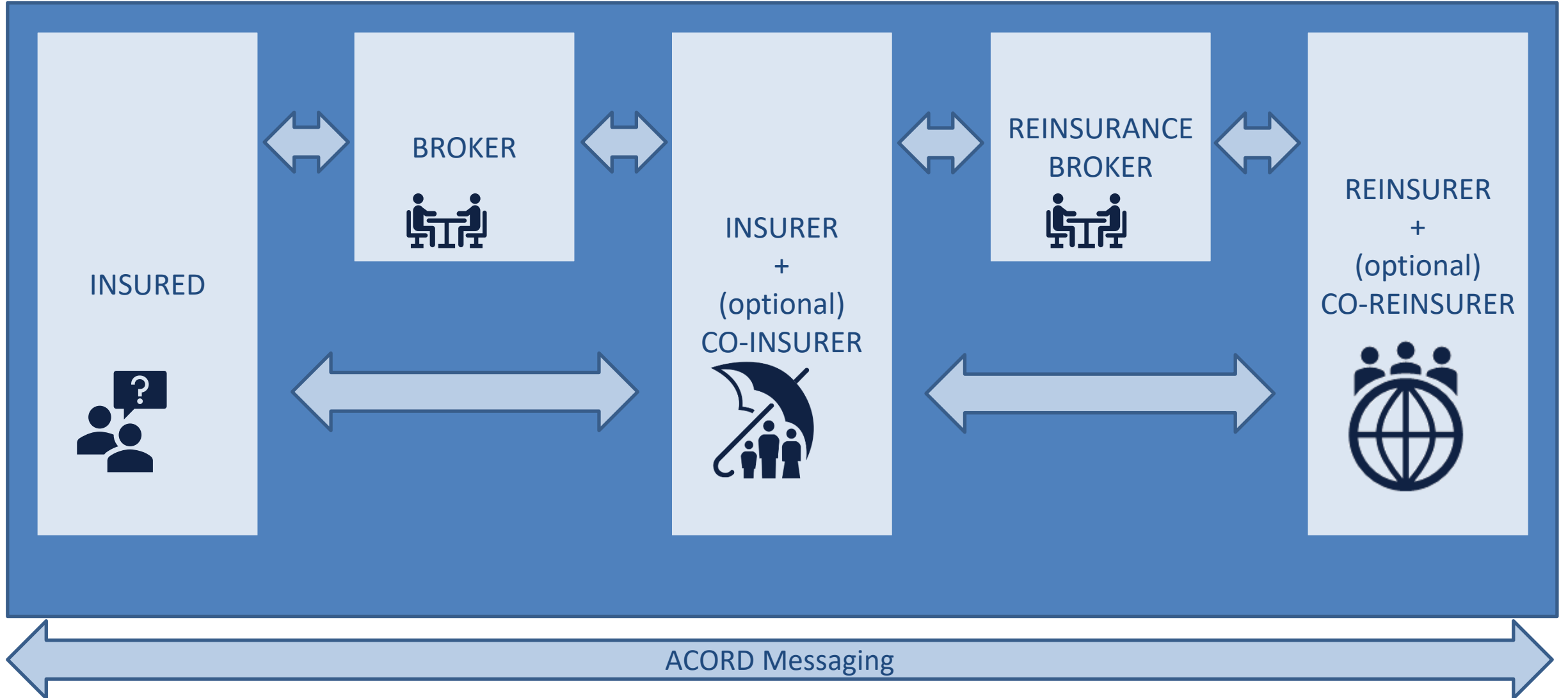


SCOR

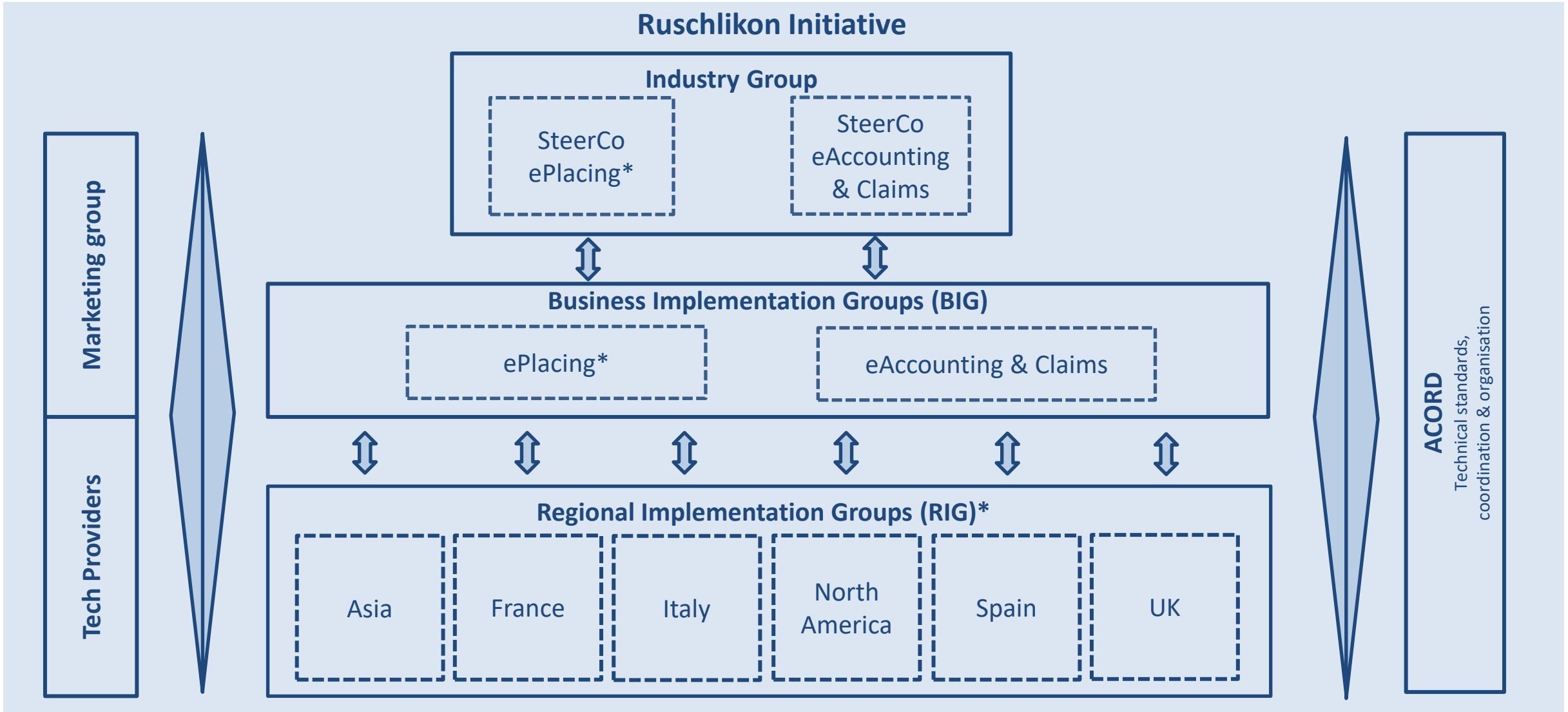
Swiss Re

wtw

# Scope of Ruschlikon activities - From bid to bind & from accounting to claims handling



# Ruschlikon Structure / Organisation



[www.ruschlikon.com](http://www.ruschlikon.com)

\* ePlacing is in an early phase

## Steering Committees – ePlacing and eAccounting and Claims

- Determine objectives, strategy and priorities
- Work in close collaboration with all stakeholders
- Globally coordinate activities with other representative groups such as industry associations, vendors, etc.



SteerCo Members (Leads to contact details, same as other groups)

[Contact@Ruschlikon.com](mailto:Contact@Ruschlikon.com)

## Business Implementation Group ePlacing (ePBIG)

- Standardize the generic data attributes used in the various phases of placing using existing (or where necessary enhanced) standards
- Agree and formalize process flows & protocols for placing in line with business needs
- Build best practice and implementation guides, share success factors and potential challenges
- Enhance the test harness infrastructure by including ePlacing tests to support smooth deployments



Chair ePlacing BIG (Leads to contact details, same as other groups)

[Contact@Ruschlikon.com](mailto:Contact@Ruschlikon.com)

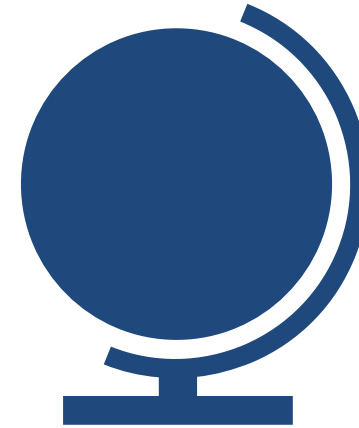
- Evaluates/refines enhancements - to be submitted to the ACORD standard process for approval by all relevant ACORD members
- Maintains the Global (Re)insurance Best Practice, Implementation and Reference guides
- Coordinates changes across the entire Ruschlikon community to support uniform adoption of the Ruschlikon Best Practice and ACORD data standards



Chair eAccounting and Claims BIG  
(Leads to contact details, same as other groups)

[Contact@Ruschlikon.com](mailto:Contact@Ruschlikon.com)

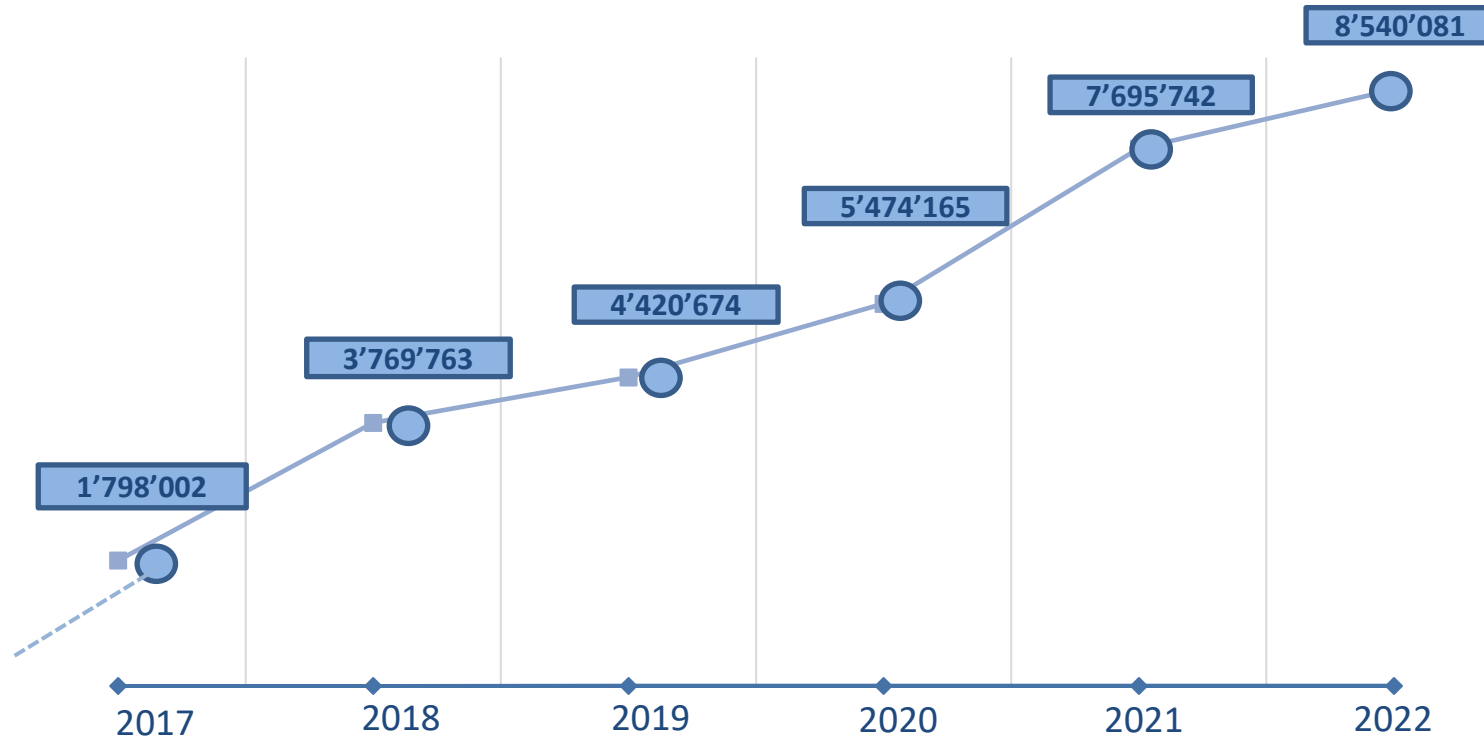
- Fosters the Ruschlikon approach in a local environment and helps drive local implementation
- Pick up on market specifics and address them efficiently to other Ruschlikon bodies
- Joining forces with other market players to address business needs more powerfully, as one community
- Leverage efforts and experience across the regions to aid implementation



Chair Regional Implementation Groups (Leads to contact details, same as other groups)

[Contact@Ruschlikon.com](mailto:Contact@Ruschlikon.com)





**x 4.75**  
Message volume  
almost quintupled  
since 2017

✓ Steady growth proves concept. Initial reporting for e-placing planned for 2023.

## Find Ruschlikon on Social Media



**Together we transform the industry.**